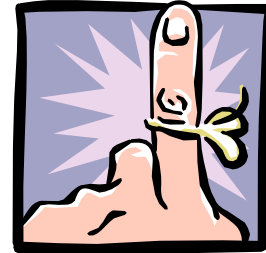


Upcoming Faculty Development Activities

- **Thursday, June 22nd** - Faculty Honors Luncheon
Cafeteria Conference Room (12pm – 1pm)
- **Thursday, July 20th** - Brown Bag Presentation:
Podcasting
Apple Computers
L3 (noon – 1pm)
- **Friday, August 4th** – Faculty Development Seminar: *The Ethics of Teaching*
Dr. Miriam Diamond, Northwestern University (Evanston, Illinois)
Location TBD (9am – 3pm)



Faculty Excellence Awards

Every year we recognize those faculty members who go above and beyond expectations to show true excellence.

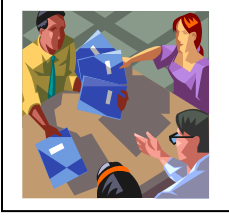
Nominations may be made for Excellence in Teaching, Clinical Excellence, or Excellence in Research, Scholarship and Creative Activities. Nomination forms are available on the CTLA website. Completed nomination forms are due to Dr. Threinen by **Friday, June 2nd**!

**Deadline for
Nominations is
Friday, June 2nd!**



Faculty Honors Luncheon

The Faculty Honors Luncheon has been scheduled for **Thursday, June 22nd**. The luncheon will be held in the Cafeteria Conference Room from 12pm until 1pm. All faculty are invited to attend. Lunch will be provided and Faculty Excellence Awards will be presented. We hope to see you there!



Current Initiatives

Program Annual Assessment Reports

Annual Assessment reports have been received by all program areas of the University. The University Assessment Committee (UAC) will review the reports and have input to the overall annual University Assessment report due out in June. The UAC met with Susan Hatfield, PhD, on March 7, 2006 as part of her University assessment evaluation. Dr. Hatfield spent an entire day as a consultant for the University and met with Dr. Sawyer, Dr. Threinen, the Deans of each of the programs and the faculty. Her final summary report is attached (Q:\ctl\website\Susan_Hatfield.pdf) and will also soon be added to the CTLA website.

Faculty Forums

CTL Advisory Group members are interested in initiating monthly Faculty Forums as an opportunity to discuss topics of common interest. An agreed upon educational topic would be announced prior to each forum. The CTL Advisory Group would like to hear your feedback, ideas and scheduling thoughts.

Faculty Development Seminar Review:

Spring Seminar Guides Faculty in Improving Curriculum

Susan Hatfield, PhD led the faculty seminar held on Friday, April 7, 2006 on the topic: "No Data Left Behind: Using Data to Improve Teaching and Learning". Twenty-seven faculty members attended the half-day seminar/workshop. Dr. Hatfield presented the data collection and interpretation model and process used at Winona State University. The faculty members had the opportunity to interpret examples of data, leading them to develop questions they would want to consider when making changes to their programs' curriculum.

Brown Bag Review:



"Building a Better Classroom:

Post-Modern Teaching in a NeXt-Rated Classroom"

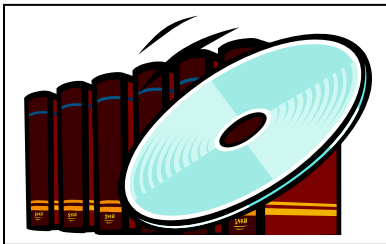
Between 20 and 25 faculty attended Dr. Pat Casello's Brown Bag presentation on March 21st. Dr. Casello discussed generational differences in learning styles, focusing on the unique traits of "Generation Next," or the "Postmoderns." After defining the major characteristics of this group of learners, she encouraged faculty in attendance to brainstorm solutions to the challenges posed by two specific traits: negotiation and incivility. The idea lists gathered will be posted on the Institutional Effectiveness pages of the NWSU website along with an outline of the presentation. The DVD recording is now available in the library.

“The Media Development Process for Course Content on the Web and DVD”

Twenty-two faculty attended Greg Steinke’s Brown Bag presentation on May 18th. Greg discussed his role at Northwestern as well as his background in art and media design. He demonstrated the video editing process and showed faculty how he could assist them with creating html Powerpoint presentations with simultaneous video footage. He also demonstrated his animation abilities. In addition to these offerings, Greg can help faculty to develop: web video, web quizzes, other audio/visual additions for the web, and DVDs for student use. For examples of Greg’s work, faculty can view the advertisement demo DVD that was shown at the end of the Brown Bag presentation, which will soon be available in the library and on the CTLA website. Anyone who is interested in utilizing these and other types of media in their course development is invited to stop in to Greg’s office to discuss the possibilities. Anita Manne is also a great resource for content development. They will both be happy to assist you with any ideas you may have!

Did you know?

Faculty Development lectures, including Brown Bag presentations, available on VHS or DVD in the library!



Currently available recordings include:

- *Ready, Set, Go: The Assessment Cycle in Motion*, Brenda Lyseng (VHS)
- *Service Learning*, Jean Strait (VHS)
- *Livertext*, Richard Laramy (VHS)
- *No Data Left Behind*, Susan Hatfield (DVD)
- *Generational Differences in Learners*, Pat Casello (DVD)
- *Strategies to Increase Student Involvement*, Jim Rasmussen (VHS and handouts)
- *Teaching Ethics to Healthcare Professionals*, Stuart Kinsinger (2 VHS)

Library Resource Requests

The Center for Teaching, Learning, and Assessment has budget money set aside to order library resources for faculty. We will be placing an order in June and would like to incorporate your suggestions! Please send detailed references for any books or materials that you would like to see added to our library collection to rpreisinger@nwhealth.edu by **June 1st, 2006!**

CTLA Faculty Reading Area

The Center for Teaching, Learning, and Assessment, located at the back of the Greenawalt Library, offers a small sitting area where faculty members are invited to come to relax and utilize library materials at any time throughout the week. The lounge is open from 8am-4:30pm, Monday through Friday, and provides a quiet space where herbal tea and water are always available. Please come take advantage of this resource!



Meet Some New Staff!

Please welcome Rachel Preisinger, our new Administrative Assistant in the Office of Institutional Effectiveness. Rachel will be responsible for coordinating faculty development activities as well other meetings and events for the CTLA, the UAC, and IE. Prior to working at Northwestern, Rachel provided administrative support for a small nonprofit youth drop-in center in North Minneapolis. She has a Bachelors degree from St. Olaf College, where she studied Psychology and is currently doing coursework for a Masters of Nonprofit Management at Hamline University.

Also new to the Office of Institutional Effectiveness is Angie Przybylski, our new Research Analyst. Angie will be working on developing and analyzing surveys and will be available as a resource to faculty and staff looking for guidance in developing their department-related assessment tools. Angie has recently completed a Masters degree in Applied Psychology with a Concentration in Industrial-Organizational Psychology at the University of Wisconsin - Stout. She has been working as a Research Assistant at UW-Stout for the past year and has just moved to the Twin Cities to begin working at Northwestern. Her first day will be on May 30th.

Please stop in to the CTLA to welcome Rachel and Angie. They both look forward to meeting you!

CTL Advisory Group

If you have suggestions or questions, please feel free to contact any of the Advisory Group members listed below:

Karen Brezinka	ext. 371	Massage Therapy
Dian Larson	ext. 463	Library
Jonathan Williams	ext. 271	Clinical Sciences
Jane Wittich	ext. 231	Basic Sciences
Pat Casello	ext. 202	MCAOM
Greg Steinke	ext. 110	Audio Visual
Noni Threinen	ext. 277	Institutional Effectiveness

University Assessment Committee

2005-2006 Members:

Mary Berg	ext. 453	Clinical Education
Pat Casello	ext. 202	MCAOM/Massage Therapy
Renee DeVries	ext. 239	Chiropractic
Don Eggebrecht	ext. 380	Chiropractic
Kren McManus	ext. 363	School of Massage
Jane Richardson	ext. 288	Chiropractic
Noni Threinen	ext. 277	Institutional Effectiveness
Xianhui Yang	ext. 370	MCAOM