



## Fall Term Brown Bag Schedule

In an effort to make attending these easier for faculty, here is the schedule for this term. **These programs run from noon-1 p.m. and will be scheduled in L1.** Be sure to mark them in your planner or put them in your PDA!

**NEXT WEEK! Thursday, September 29: Anne Mackereth (Library)**

From Your Desktop: Finding What YOU Need from the Library

**Thursday, October 20: Mark Schader (Student Affairs)**

Student Disabilities

**Thursday, November 17: NWHSU Faculty**

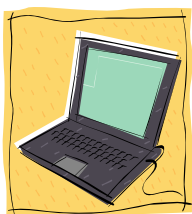
Assessment Techniques and Conference update

## 2005 Assessment Institute

Indiana University- Purdue University Indianapolis is presenting the 2005 Assessment Institute **October 23-25 at the University Place Conference Center & Hotel in Indianapolis, IN.** There will be opportunities for in-depth learning with scholars and practitioners through plenary sessions and workshops. There will also be a Best Practices Fair.



For more detailed descriptions of the workshops, go to [www.planning.iupui.edu](http://www.planning.iupui.edu) . If you are interested in attending this Institute, please contact Dr. Noni Threinen at ext. 277. Two faculty members will be selected to represent NWHSU at the conference. Registration and travel expenses will be paid for the individuals selected to attend. **Registration deadline: September 30, 2005.**



## The Collaboration... Information you can really use!

Northwestern Health Sciences University maintains a membership to The Collaboration for the Advancement of College Teaching and Learning. There are a variety of programs and services that they offer to you through our membership:

- ▶ ***“Diversity Here and Now: Holistic and Sustainable Approaches to Multicultural Learning (November 18-19 at the Sheraton Bloomington Hotel)***. This conference will feature a compelling performance by the Illusion Theater, a closing address by Stanford professor Claude Steele and over 30 outstanding concurrent and pre-conference sessions. **Early bird registration is due by October 24.** Interested in attending? Talk to Dr. Threinen (ext. 277). Stipends are available.
- ▶ **Looking ahead:** The Collaboration will hold their Winter, 2006 conference “Building a Learning-Centered Institution” on **February 17-18, 2006** at the Sheraton Bloomington Hotel.
- ▶ There is a host of references and information on The Collaboration website, available to members only. To access any of that, go to [www.collab.org](http://www.collab.org), username: **member**; password: **k05sgf**

## Faculty Development Survey Update



Thanks to all who contributed their thoughts and ideas in the Faculty Development Needs Assessment survey sent in July! We had a response rate of 35%, and all NWHHSU departments were represented. We'll be sending out a survey report next week so you too can see some of the activities and topics your fellow faculty members are interested in. The findings will also be reviewed and discussed by the CTLA Advisory group to help in planning and developing future faculty development activities. Thanks again for your participation in the survey, and watch for the complete report coming to you soon.

## New Library Resource: Assessment Update

Assessment Update has been ordered both in paper and online back to the beginning of 2005. You will find this in the Library where the periodicals are located (in alphabetical order) or just ask one of the helpful librarians for assistance.

## University Assessment Committee

The UAC has been currently applying different assessment techniques in their classes and will be presenting the results in an upcoming Faculty Development seminar. If you have comments or questions about assessment or are interested in the tools they are currently using, please contact any of the UAC members.

**UAC members include:**

Mary Berg	ext. 453	Clinical Education
Pat Casello	ext. 202	MCAOM/Massage Therapy
Renee DeVries	ext. 239	Chiropractic
Don Eggebrecht	ext. 380	Chiropractic
Kren McManus	ext. 363	School of Massage
Jane Richardson	ext. 288	Chiropractic
Mary Tuchscherer	ext. 287	MCAOM
Xianhui Yang	ext. 370	MCAOM
Hannah Seoh		Student representative- MCAOM



If you have suggestions or questions, please feel free to contact any of the Advisory Group members listed below:

Mary Berg	ext. 453	Clinical Education
Dian Larson	ext. 463	Library
Jonathan Williams	ext. 271	Clinical Sciences
Jane Wittich	ext. 231	Basic Sciences