



[SKIP DIRECTLY TO WHAT YOU NEED](#)

[College of Chiropractic](#)

[College of Acupuncture and Chinese Medicine](#)

[College of Health and Wellness](#)

[NWHSU Online](#)





NORTHWESTERN
HEALTH SCIENCES
UNIVERSITY

2026 VIEWBOOK



Experience
a Better
Way to
Learn.



A BETTER WAY TO HEALTH



Healthcare Focused:

All courses are taught from a healthcare lens



Tight-Knit Community:

Approximately 1100 students



Proven Reputation:

National reputation for integrative healthcare education

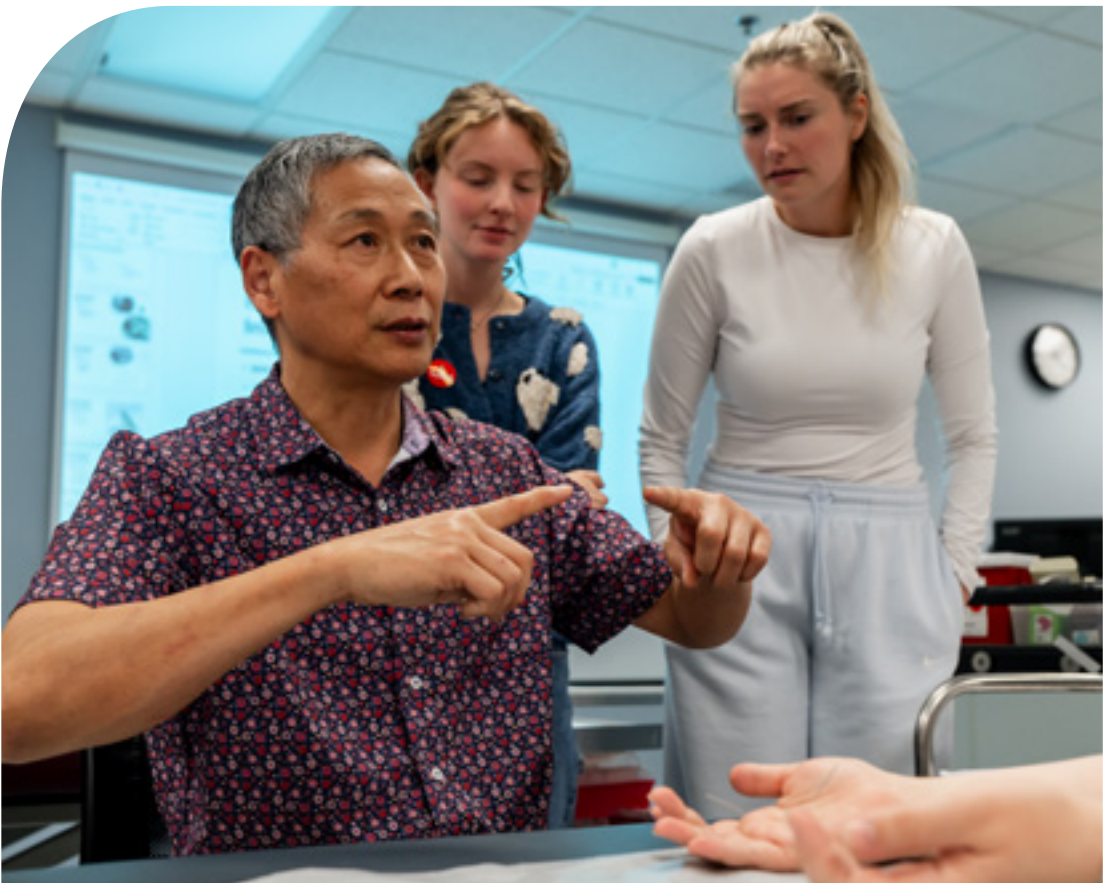


Nation-Leading Outcomes:

- NWHSU's College of Chiropractic has the highest graduation rates in the country
- 94% graduation rate, ranked #1 among U.S. schools
- 92.1% board pass rate (All parts NCBE; 4-year average), consistently ranked in top 3 schools in the nation



We believe that a person-centered approach is the better way to learn, practice and grow.





We're shaping the future of healthcare. Are you ready to join us?

At NWHHSU, you'll hear a lot about person-centered healthcare. The idea is simple, but it's also revolutionary: we treat each patient as an individual, ensuring they get the right care at the right time. The result? Better health for all.

No matter which program you're interested in, at NWHHSU you'll join a community of healthcare professionals working collaboratively to support patients and change the future of healthcare.



WHY NWHSU?

The short answer? Because here, people come first, always.

Faculty Who Know You, and the Field

Our faculty are the best in their fields. They have successful practices and careers, they do research, and most importantly, they love to teach. Your professors want to be in the classroom, and you'll feel that every day.

Small Community, Big Resources

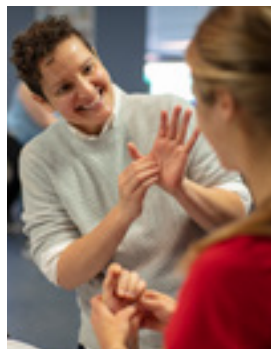
NWHSU is just the right size. We have a high-tech anatomy lab, resource-packed library, and updated campus amenities. But you'll never get lost in a crowd here. Everyone on campus, from the financial aid office to the classroom, wants you to succeed.

Leaders in Real World Clinical Experience

Healthcare is a hands-on field, and we've worked for over 85 years building strong relationships with the local—and global—healthcare community. You'll gain best in class clinical experience at NWHSU, where we created the first Chiropractic Community-Based Internship program in the country.

Graduates Who Speak for Themselves

Our network of over 10,000 alumni says it all. They're successful, building diverse careers that fit their unique goals. We boast a 94% graduation rate, ranked #1 among US schools, and our student loan default rate is nearly 0%. You'll feel supported here, and you'll also feel empowered to set out on your own and thrive.



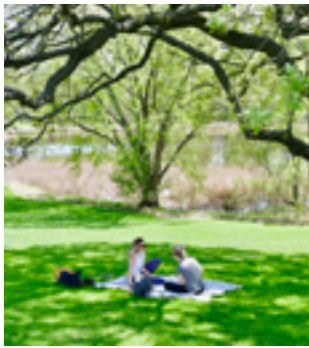


A CAMPUS WHERE YOU'LL FEEL AT HOME

We like to describe our campus as the best of both worlds.

It's big enough to offer resources like updated science labs and a supportive library, but small enough that you'll see familiar faces every day. It's close to the vibrancy of the Twin Cities but tucked into a beautiful 25-acre plot in the quiet suburb of Bloomington.

Whether you're sweating it out in the gym or cozied up by the fireplace in the lounge, we think you'll enjoy your time on campus.



COLLEGE OF CHIROPRACTIC

The Only Competency-Centered Program in the U.S.

You're busy, so we'll get right to it: at NWHSU you will think like a doctor from day one. You'll understand the clinical application of everything you learn: from biochemistry to methods. You'll be tested on competency, helping you build confidence in your skills early. If this sounds special, that's because it is. No other chiropractic school is offering a competency-centered model.



The Details

Degree: Doctor of Chiropractic (DC) with optional Sports and Rehabilitation Emphasis

Format: Rigorous, day-time program. Most of the program is hands-on, with hybrid and asynchronous learning built in when it makes sense.

Timing: Full-time, it'll take you a little over three years (10 trimesters) to earn your DC. Motivated students who are excelling in coursework have the opportunity to graduate a trimester early.

Why NWHSU?

#1 in Clinical Education. Here, you'll get more practice than anywhere else, with real time assessment, the most internship sites, and hands-on experience beginning trimester 1.

Top in Board Scores. We prepare our students for National Boards. Our students consistently excel on boards, earning top scores in the country.

Leader in Sports Chiropractic. You can add a Sports and Rehabilitation Specialization to your education without adding time or cost to your degree, working with leaders in the field in our [Human Performance Center](#).

[See Accreditation Information.](#)

Ready to take the next step?

- [Apply](#)
- [Attend Discovery Day](#)
- [Schedule a Campus Tour](#)



WE MADE A TOP CHIROPRACTIC PROGRAM EVEN BETTER.

If you've gotten this far, you know we're proud of our program. But we're always striving to improve, which is why we launched the new competency-centered curriculum model to improve your experience and help you graduate with more confidence ([you can learn more about it from Dean Dr. BurnsRyan on our blog](#))



Intrigued? Register for the next [Discovery Day](#).

COLLEGE OF ACUPUNCTURE AND CHINESE MEDICINE

Gain Confidence with the Best Clinical Training in the Country

Our Acupuncture and Chinese Medicine program prepares you for a successful practice in the evolving field of healthcare. You'll graduate confident in your knowledge of Chinese medicine theory, with strong training in biomedicine to help you collaborate on patient care: whether you're in solo practice or working in an integrative setting.



The Details

Degrees offered: Master of Acupuncture (MAc) and Doctor of Acupuncture with Chinese Herbal Medicine Specialization (DAcCHM)

Format: Rigorous, day-time program. More than 50% of the program is hands-on, with hybrid and asynchronous learning built in when it makes sense.

Timing: Full-time, it'll take you just under three years (8 trimesters) to earn your master's, or just under four years (10 trimesters) to earn your doctorate.

Why NWHSU?

#1 in Clinical Opportunities. Intern in hospitals, clinics for underserved communities, our integrative sports medicine clinic (Human Performance Center), and more.

Integrative Curriculum. Graduate confident in your knowledge of classical Chinese medicine theory and biomedical anatomy and physiology.

Impressive Faculty Who Want You to Succeed. More than half of our faculty members were educated in China and hold advanced degrees from Chinese universities. With a 4:1 student-faculty ratio, they'll know you and your goals.

[See Accreditation Information.](#)

Ready to take the next step?

- [Apply](#)
- [Attend Discovery Day](#)
- [Schedule a Campus Tour](#)

ACUPUNCTURE IS GAINING TRACTION IN MAINSTREAM HEALTHCARE.

Minnesota is a great place to study Chinese medicine, as we're ahead of the curve in integrating acupuncture into health systems. Nationwide, the field is gaining recognition, with the CDC, WHO, and more recommending acupuncture as a first-line treatment.

Check out this [video](#) to learn how our program prepares you for the current healthcare landscape from the faculty and students who know it best



Intrigued? Register for the next [Discovery Day](#).



COLLEGE OF HEALTH AND WELLNESS

Start Your Career in Health Sciences in a Supportive Community

Our College of Health and Wellness offers a diverse range of programs designed to help you launch into a healthcare career that fits your skills and goals. Whether you're interested in working in the lab, imaging, or becoming an MD, at NWHSU you'll find the support you need to succeed.



Programs and Degrees

[Massage Therapy](#) (Associate of Applied Science, certificates in Relaxation, Therapeutic, East West, and Shiatsu)

[Post Baccalaureate Prehealth](#) (PBPH) & [Human Biology](#) (Bachelor of Science Completion)

[Radiation Therapy](#) (Associate of Science)

[Radiologic Technology](#) (Associate of Applied Science)

Timeline and format vary by program, click the program names above for more information.

Why NWHSU?

[Hybrid Programs to Fit Your Needs.](#) Come to campus to learn hands-on skills and have flexibility to learn from home for some lectures.

[Small Community, Big Resources.](#) We have the resources of a bigger school (student support services, updated science labs, comfortable study spaces), with the community feel of a small college.

[Faculty Who Want You to Succeed.](#) Your professors won't just know your name, they'll know your goals, and your challenges too. Everyone here wants you to succeed, and you'll feel that.

See Accreditation
Information:

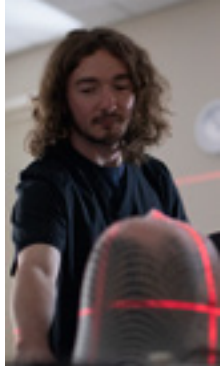
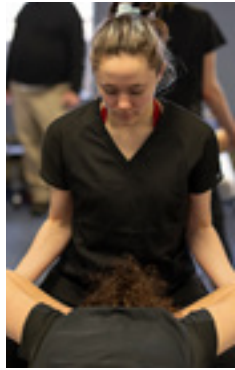
[Massage Therapy](#)

[Radiation Therapy](#)

[Radiologic Technology](#)

Ready to take the next step?

- [Apply](#)
- [Attend Discovery Day](#)
- [Schedule a Campus Tour](#)



WE LOVE TO SEE OUR GRADUATES THRIVE.

The best time of year for our PBPH professors? Acceptance season. Students who worked hard for months—or years—to apply to medical school reach out to share their amazing news! Interested in seeing where our grads end up, and how they got there? Check out the [story](#) on our blog and watch the [video](#).



Intrigued? Register for the next [Discovery Day](#).

NWHSU ONLINE

Advance Your Healthcare Career on Your Own Schedule

Our online programs bring the evidence-based healthcare education you trust from NWHSU to your home, on your schedule. These flexible programs are designed to grow your career—or help you take off in a new direction. Expect content you can put into practice right away, delivered by experts in the field.



Programs and Degrees

[Functional and Integrative Nutrition](#) (Master of Health Science and Doctor of Nutrition)

[Integrative Care](#) (Master of Health Science, with specializations in Trauma-Informed Care, Integrative Health Coaching, and Integrative Healthcare Administration)

[Integrative Health and Wellbeing Coaching](#) (Graduate Certificate)

[Functional Sports and Performance Nutrition](#) (Graduate Certificate)

Timing: You can complete a master's in about a year or go at your own pace.

Classes are all delivered online, mostly asynchronously. Click the program names above for more information.

Why NWHSU?

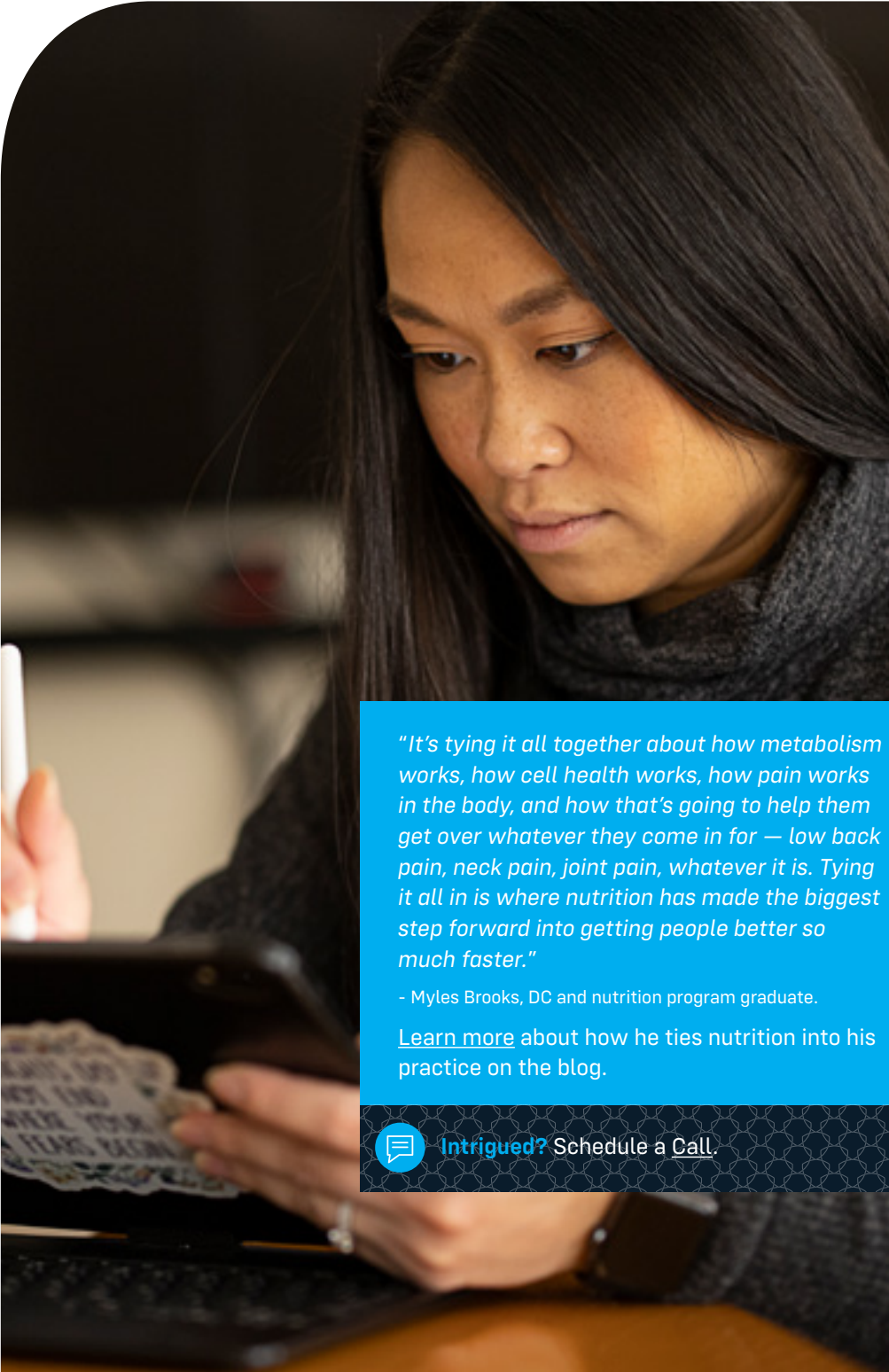
[A Degree from a Trusted Health Sciences University.](#) You have many options for online education. NWHSU, health care is our one and only focus. We're a nonprofit, mission-driven school you can trust.

[Opportunities to Specialize.](#) Take courses that are meaningful to you and your career goals. Both master's programs are built to encourage you to follow your interests.

[Built to Prepare You for Certification.](#) Our nutrition program prepares you for the next steps to become a Certified Nutrition Specialist (CNS) and a Certified Clinical Nutritionist (CCN), and our health coaching certificate makes you eligible for national board certification by National Board of Health and Wellness Coaching (NBHWC).

Ready to take the next step?

- [Apply](#)
- [Attend a Virtual Info Session](#)
- [Check out the latest from NWHSU Online](#)



"It's tying it all together about how metabolism works, how cell health works, how pain works in the body, and how that's going to help them get over whatever they come in for — low back pain, neck pain, joint pain, whatever it is. Tying it all in is where nutrition has made the biggest step forward into getting people better so much faster."

- Myles Brooks, DC and nutrition program graduate.

[Learn more](#) about how he ties nutrition into his practice on the blog.



Intrigued? [Schedule a Call.](#)



NORTHWESTERN
HEALTH SCIENCES
UNIVERSITY



Like what you see? We'd love to get to know you.

Joining us on campus for Discovery Day (or virtual info sessions for online programs) is a great way to get to know the faculty and students who make NWHSU what it is. Plus, it gives us a chance to get to know you and your goals.



Click here to register for the next Discovery Day.



Click here to register for an online virtual information session



Not quite ready to come to campus? Or can't wait?

Check out our [virtual tours](#).