



NORTHWESTERN
HEALTH SCIENCES
UNIVERSITY

2026 VIEWBOOK

NWHSU College of Chiropractic



**Learn.
Practice.
Grow.**

A person-centered
approach to
education and
healthcare.

COLLEGE OF CHIROPRACTIC

The Only Competency-Centered Program in the U.S.

You're busy, so we'll get right to it: at NWHHSU you will think like a doctor from day one. You'll understand the clinical application of everything you learn: from biochemistry to methods. You'll be tested on competency, helping you build confidence in your skills early. If this sounds special, that's because it is. No other chiropractic school is offering a competency-centered model.



The Details

Degree: Doctor of Chiropractic (DC) with optional Sports and Rehabilitation Emphasis

Format: Rigorous, day-time program. Most of the program is hands-on, with hybrid and asynchronous learning built in when it makes sense.

Timing: Full-time, it'll take you a little over three years (10 trimesters) to earn your DC. Motivated students who are excelling in coursework have the opportunity to graduate a trimester early.



Why NWHHSU?

#1 in Clinical Education. Here, you'll get more practice than anywhere else, with real time assessment, the most internship sites, and hands-on experience beginning trimester 1.

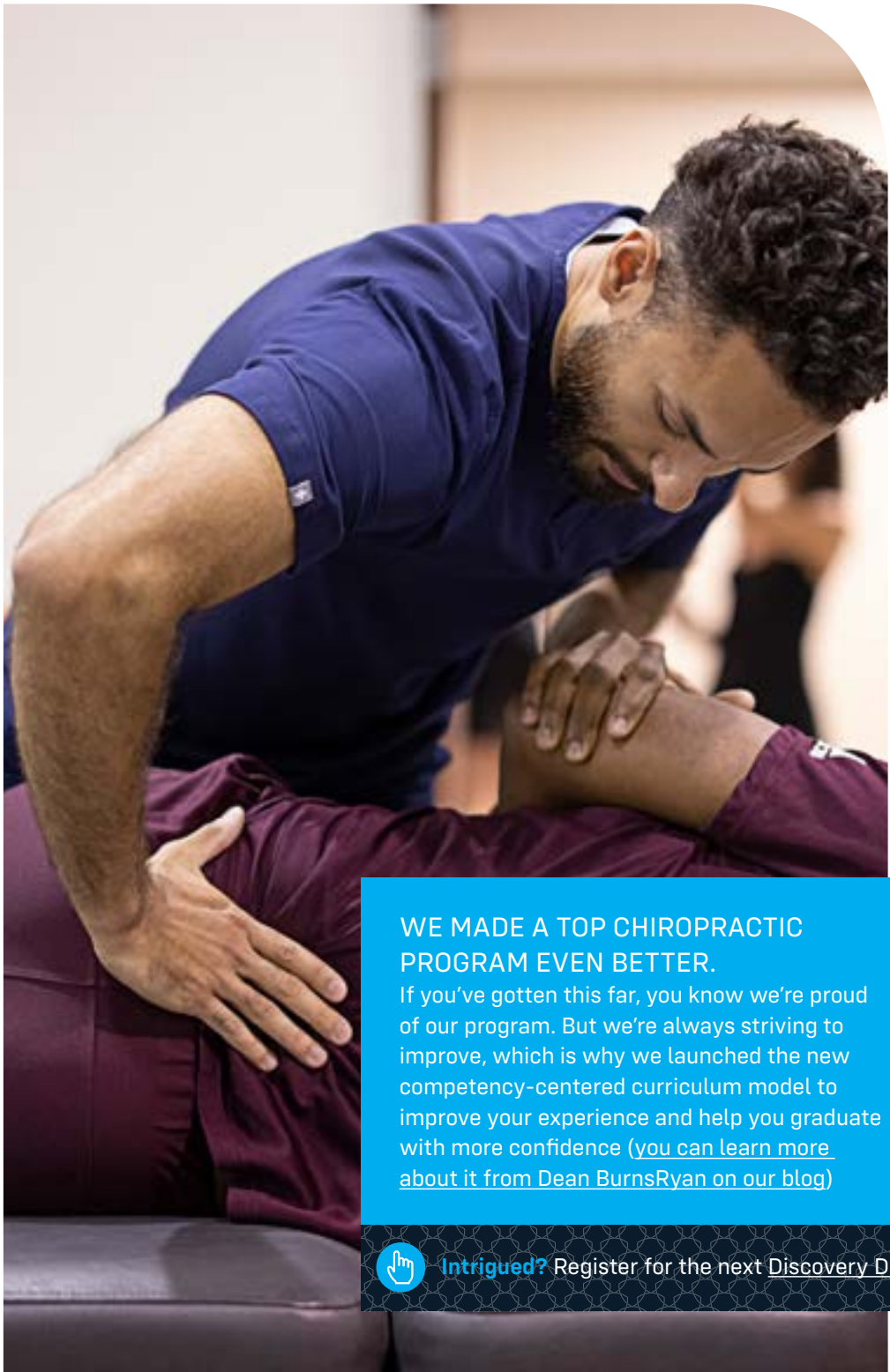
Top in Board Scores. We prepare our students for National Boards. Our students consistently excel on boards, earning top scores in the country.

Leader in Sports Chiropractic. You can add a Sports and Rehabilitation Specialization to your education without adding time or cost to your degree, working with leaders in the field in our [Human Performance Center](#).

[See Accreditation Information.](#)

Ready to take the next step?

- [Apply](#)
- [Attend Discovery Day](#)
- [Schedule a Campus Tour](#)



WE MADE A TOP CHIROPRACTIC PROGRAM EVEN BETTER.

If you've gotten this far, you know we're proud of our program. But we're always striving to improve, which is why we launched the new competency-centered curriculum model to improve your experience and help you graduate with more confidence ([you can learn more about it from Dean BurnsRyan on our blog](#))



Intrigued? Register for the next [Discovery Day](#).

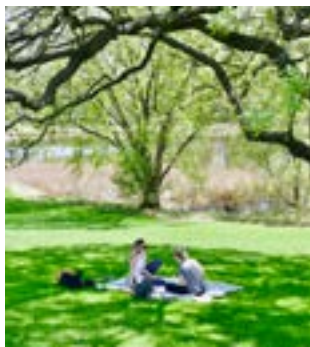


A CAMPUS WHERE YOU'LL FEEL AT HOME

We like to describe our campus as the best of both worlds.

It's big enough to offer resources like updated science labs and a supportive library, but small enough that you'll see familiar faces every day. It's close to the vibrancy of the Twin Cities but tucked into a beautiful 25-acre plot in the quiet suburb of Bloomington.

Whether you're sweating it out in the gym or cozied up by the fireplace in the lounge, we think you'll enjoy your time on campus.





WHY NWHHSU?

The short answer? Because here, people come first, always.

Faculty Who Know You, and the Field

Our faculty are the best in their fields. They have successful practices and careers, they do research, and most importantly, they love to teach. Your professors want to be in the classroom, and you'll feel that every day.

Small Community, Big Resources

NWHHSU is just the right size. We have a high-tech anatomy lab, resource-packed library, and updated campus amenities. But you'll never get lost in a crowd here. Everyone on campus, from the financial aid office to the classroom, wants you to succeed.

Leaders in Real World Clinical Experience

Healthcare is a hands-on field, and we've worked for over 85 years building strong relationships with the local—and global—healthcare community. You'll gain best in class clinical experience at NWHHSU, where we created the first Chiropractic Community-Based Internship program in the country.

Graduates Who Speak for Themselves

Our network of over 10,000 alumni says it all. They're successful, building diverse careers that fit their unique goals. We boast a 94% graduation rate, ranked #1 among US schools, and our student loan default rate is nearly 0%. You'll feel supported here, and you'll also feel empowered to set out on your own and thrive.





A BETTER WAY TO HEALTH



Highly Valued

The most affordable chiropractic school in the Midwest.



First & Only

The innovative competency-centered curriculum will have you thinking like a doctor from day one.



1460+ Hours Of Hands-On Training

Our graduates are prepared to heal with nearly 50% more hands-on clinical hours.



People First

We are united in the belief that a person-centered approach is a better way to health.



Leading Faculty

Our nation-leading clinical education program offers 2:1 student-to-faculty ratio. Close mentorship builds confidence.



Student Success

Our graduation rate of 94.2% ranks among the highest in the nation.



Clinical Internship Sites

Most in the country. Preceptorships in U.S. and Canada as early as Trimester 8.



Impressive Test Scores

Our graduates are leaders in chiropractic board pass rates with one of the best in the country at 92.1%



We believe that a person-centered approach is the better way to learn, practice and grow.





We're shaping the future of healthcare. Are you ready to join us?

At NWHHSU, you'll hear a lot about person-centered healthcare. The idea is simple, but it's also revolutionary: we treat each patient as an individual, ensuring they get the right care at the right time. The result? Better health for all.

At NWHHSU you'll join a community of healthcare professionals working collaboratively to support patients and change the future of healthcare.

CANADIAN STUDENT CHECKLIST



Located in the friendly Midwest, NWSU has a long history of welcoming Canadian students to our chiropractic program. Our admissions counselors are prepared to support you every step of the way.

Applying to graduate school in another country is a big decision. Here's a checklist to help you understand the process:

Admission Requirements

- Ensure you meet the academic qualifications, including: [prerequisite coursework](#) and [GPA requirements](#).
- Verify the [specific documentation needed for international students](#), such as proof of English proficiency if applicable.

Tuition and Fees

- Look into the [tuition costs](#), understanding the exchange rate. Current NWSU tuition is adjusted by the currency exchange rate between the Canadian and U.S. dollars at the beginning of the trimester, with a maximum reduction of 25% of tuition.

Visa and Immigration

- You will need an F-1 student visa to study in the U.S. [Student Affairs at NWSU](#) has helped many students through this process, and can support you—but you want to get started as soon as possible!

Financial Planning

- Plan for living expenses, including [housing](#), food, transportation, and health insurance.

CANADIAN STUDENT CHECKLIST (CONT.)

Financial Planning

- Plan for [living expenses](#), including housing, food, transportation, and health insurance.
- Look into scholarships and financial aid options that may be available for international students.
- You will also need to submit a Certificate of Finance. We provide an [example on our FAQ page](#), and can support you through the process.

Program Curriculum and Schedule

- Review the curriculum for the Doctor of Chiropractic program to ensure it aligns with your career goals. Find a detailed [curriculum overview here](#).
- Check the [academic calendar](#) to understand the program's structure, including start dates, breaks, and exam periods.

Licensing and Accreditation

- NWHSU is accredited and your degree will be recognized in Canada and the U.S.
- We provide [information on the Canadian Chiropractic Boards](#), and you will graduate prepared to take them if you plan to practice in Canada.

Community

[Choose a chiropractic school where you will feel comfortable and build a strong community.](#) Canadian students at NWHSU report feeling at home in Bloomington, Minnesota. It's a green, suburban location with access to the activity of the Twin Cities. There is a Canadian Club, as well as many other active student organizations. Whatever your interests, you'll find a place here.

Ready to take the next step?

- [Apply](#)
- [Attend Discovery Day](#)
- [Schedule a Campus Tour](#)



NORTHWESTERN
HEALTH SCIENCES
UNIVERSITY



Like what you see? We'd love to get to know you.

Joining us on campus for Discovery Day is a great way to get to know the faculty and students who make NWHSU what it is. It gives us a chance to get to know you and your goals. Plus, a portion of your travel could be reimbursed.



Click here to register for the next Discovery Day.



Click here to connect with an Admissions Counselor.



Not quite ready to come to campus? Or can't wait?

Check out our [virtual tours](#).