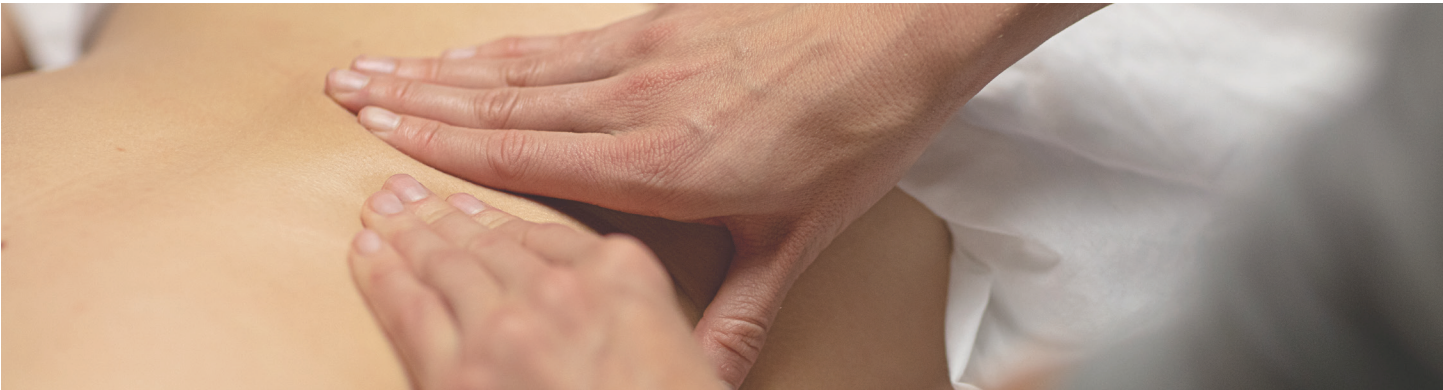


SHIATSU CERTIFICATE



Trimester 1 (9.5 Credits)		Credits
MTSU-1101	Fundamentals of Chinese Medicine Theory	3.0
MTSU-1102	Foundations of Shiatsu Therapy	2.5
MTSU-1103	Patterns & Pathology of Chinese Medicine Theory	3.0
MTCL-1100	Pre-Clinic Workshop	1.0
BLS-1000	Basic Life Support	0.0
Trimester 2 (10.0 Credits)		
MTSU-1104	Shiatsu Techniques and Applications	5.0
MTSU-1105	Shiatsu Clinic Training & Summary Session	2.0
MTSU-1106	Shiatsu Student Clinic	2.0
INCR-1001	Foundations of Integrative Care	1.0
Program Total		19.5

- Notes:**
1. AAS and Relaxation Certificate students must dual enroll for Shiatsu Therapy
 2. Massage Therapy practioners (non-alumni) must have graduated from an accredited institution