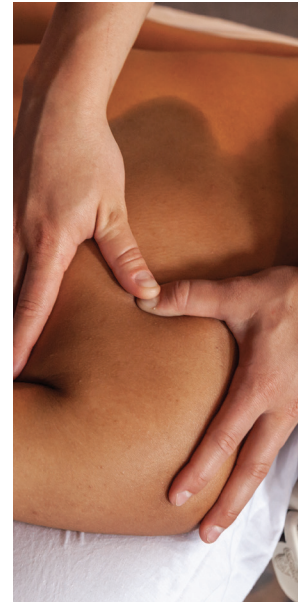


CERTIFICATE IN THERAPEUTIC MASSAGE AND AAS PROGRAM

Sample Schedule Fall 2026-Summer 2027

Daytime*

Trimester 1		Credits
MTSC-1201	Anatomy and Physiology 1	4.0
MTPR-1121	Ethics and Professionalism	2.0
MTPR-1122	Foundations of Evidence-Informed Practice	1.0
MTPR-1120	Wellness and Self Care	1.0
MED-1000	Medical Terminology	1.0
MTCL-1100	Pre-Clinic Workshop	1.0
MTTE-1101	Relaxation Massage 1	2.5
MTTE-1102	Relaxation Massage 2	2.0
Totals		14.5
Trimester 2		Credits
MTSC-1202	Anatomy and Physiology 2	4.0
MTSC-1212	Applied Anatomy	2.0
MTPR-1221	Business and Practice Management	1.5
MTCL-1201	Clinic Rotation 1: Foundational Skills	1.0
MTCL-1202	Clinic Rotation 2: Enhancement of Clinical Skills	1.0
MTTE-1201	Clinical Massage 1	3.5
MTTE-1202	Clinical Massage 2	3.5
INCR-1001	Foundations of Integrative Care	1.0**
Totals		17.5
Trimester 3		Credits
MTTE-1300	Hydrotherapy	0.5
MTPR-1123	Legal Aspects of Therapeutic Massage	0.5
MTPR-1321	Professional Development-Job Search Skills	0.5
MTTE-1400	Massage Therapy for Specific Populations	2.0
MTSC-1311	Pathology	2.0
MTCL-1301	Clinic Rotation 3: Refinement of Clinical Skills	1.0
MTCL-1302	Clinic Rotation 4: Mastery of Clinical Skills	1.0
MTPR-1240	Trauma Informed Healthcare	1.0
	Elective Requirements	3.0
Totals		11.5
Totals for Entire Program		43.5
Electives		Credits
MTEL-1101	REFLEXOLOGY 1	1.5
MTEL-1105	REIKI LEVEL 1	1.0
MTEL-1107	FOUNDATIONS OF HEALING TOUCH, COURSE 1	1.0
MTEL-1230	INTRO TO CRANIOSACRAL THERAPY	1.0
MTEL-1250	TAI JI	0.5
MTEL-1320	SPORTS MASSAGE	0.5
MTEL-1330	ADVANCED CLINICAL TRAINING: NEUROMUSCULAR THERAPY AND FASCIAL TECH-	3.5
MTEL-1350	INTRODUCTION TO ENERGY MEDICINE	2.0
MTEL-1400	INSURANCE BILLING PRACTICES FOR MASSAGE THERAPY	0.5
MTEL-1500	INTRODUCTION TO CHINESE MEDICINE AND CUPPING	1.5
MTEL-1951	MASSAGE THERAPY FOR THE MEDICALLY COMPLEX	2.0



To get your **AAS in Massage Therapy** you only need to add the following credits:
15 Credits of General Education and 6 Credits of Electives.

*Additional flexible schedules are available. Contact your admissions representative for details.

**The Foundations of Integrative Care course is a free 1 credit course for our students.

Note: Courses subject to change. Please visit Northwestern Health Sciences University's website for latest course information: nwhealth.edu

Sample Schedule Fall 2026-Summer 2027

Evening*

Trimester 1		Credits
MTSC-1201	Anatomy and Physiology 1	4.0
MTPR-1121	Ethics and Professionalism	2.0
MTPR-1120	Wellness and Self Care	1.0
MED-1000	Medical Terminology	1.0
MTTE-1101	Relaxation Massage 1	2.5
Totals		10.5
Trimester 2		Credits
MTSC-1202	Anatomy and Physiology 2	4.0
MTSC-1212	Applied Anatomy	2.0
MTPR-1122	Foundations of Evidence-Informed Practice	1.0
FAD-1000	First Aid	0.0
MTCL-1100	Pre-Clinic Workshop	1.0
MTTE-1102	Relaxation Massage 2	2.0
INCR-1001	Foundations of Integrative Care	1.0**
Totals		11.0
Trimester 3		Credits
MTPR-1221	Business and Practice Management	1.5
MTTE-1300	Hydrotherapy	0.5
MTPR-1123	Legal Aspects of Therapeutic Massage	0.5
MTPR-1321	Professional Development-Job Search Skills	0.5
MTTE-1201	Clinical Massage 1	3.5
MTCL-1201	Clinic Rotation 1: Foundational Skills	1.0
MTCL-1202	Clinic Rotation 2: Enhancement of Clinical Skills	1.0
MTPR-1240	Trauma Informed Healthcare	1.0
Totals		9.5
Trimester 4		Credits
MTSC-1311	Pathology	2.0
MTTE-1400	Massage Therapy for Specific Populations	2.0
MTTE-1202	Clinical Massage 2	3.5
MTCL-1301	Clinic Rotation 3: Refinement of Clinical Skills	1.0
MTCL-1302	Clinic Rotation 4: Mastery of Clinical Skills	1.0
	Elective Requirements	3.0
Totals		12.5
Totals for Entire Program		43.5
Electives		Credits
MTEL-1101	REFLEXOLOGY 1	1.5
MTEL-1105	REIKI LEVEL 1	1.0
MTEL-1107	FOUNDATIONS OF HEALING TOUCH, COURSE 1	1.0
MTEL-1230	INTRO TO CRANIOSACRAL THERAPY	1.0
MTEL-1250	TAI JI	0.5
MTEL-1320	SPORTS MASSAGE	0.5
MTEL-1330	ADVANCED CLINICAL TRAINING: NEUROMUSCULAR THERAPY AND FASCIAL TECH-	3.5
MTEL-1350	INTRODUCTION TO ENERGY MEDICINE	2.0
MTEL-1400	INSURANCE BILLING PRACTICES FOR MASSAGE THERAPY	0.5
MTEL-1500	INTRODUCTION TO CHINESE MEDICINE AND CUPPING	1.5
MTEL-1951	MASSAGE THERAPY FOR THE MEDICALLY COMPLEX	2.0



To get your **AAS in Massage Therapy** you only need to add the following credits: **15 Credits of General Education and 6 Credits of Electives.**

*Additional flexible schedules are available. Contact your admissions representative for details.

**The Foundations of Integrative Care course is a free 1 credit course for our students.

Note: Courses subject to change. Please visit Northwestern Health Sciences University's website for latest course information: nwhealth.edu